

CHRISTIAN DUVERNOIS LANDSCAPE / STUDIO

LANDSCAPE DESIGN | ART | PROJECT MANAGEMENT

MISSION STATEMENT

CDL/S endeavors to create distinctive **landscapes**. Through a rigorous process of spatial, aesthetic, environmental, and technical exploration, CDL/S formulates adaptive strategies catered to the clients' vision and individualized program requirements to deliver beautifully crafted, long-lasting, and positively memorable outdoor living spaces.

In addition to improving site amenity and use, CDL/S believes landscapes must aim for sustainability in both their form and function. By purposefully integrating green infrastructure, low-impact building materials, native plant species, biodiversity support, edible gardens, climate adaptation, and other renewable and regenerative measures, CDL/S promotes a genuine sense of connection and coexistence with our shared natural world.

CDL/S' design approach is further exemplified by the integration of exterior-grade decorative art, sculpture, furniture, and other expressive objects into the landscape. By engaging artists early on, the overall design outcome is elevated.



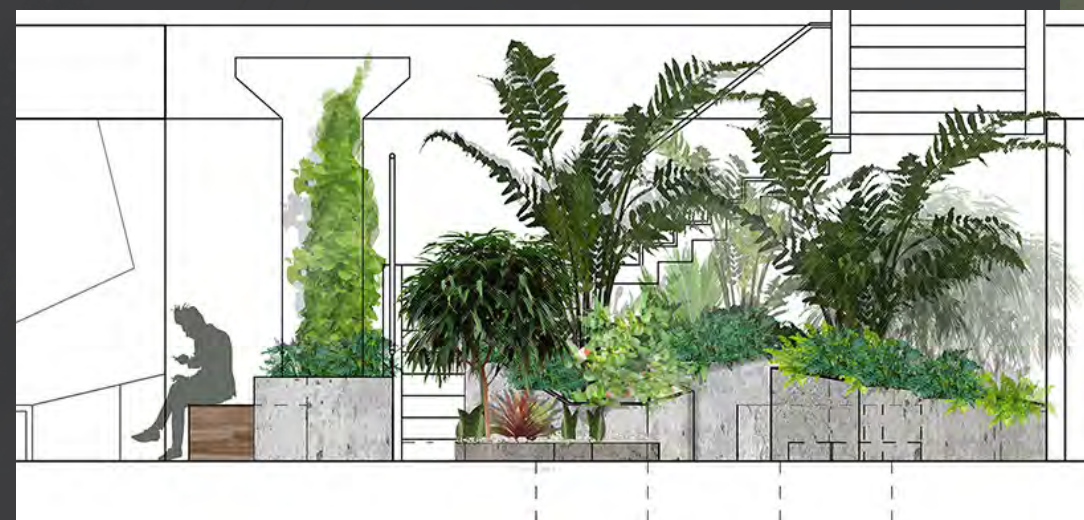


DESIGN SERVICES

By posing essential questions, analyzing site constraints and opportunities, and exploring alternative solutions, CDL/S carries designs from their earliest stages to their completion. Utilizing a tailored approach involving **initial consultations, site analysis, conceptual design, technical development, construction management, and evaluation**, CDL/S has continually satisfied and surpassed the high expectations of property owners, developers, and architects from New York City to Asia for over twenty years.

Practicing across both ends of every project - landscape design for creation and project management for implementation - **CDL/S seamlessly bridges renders into physical reality** while maintaining utmost design integrity and quality. For projects led by professional architects or engineers, CDL/S brings this same core strength to collaborative, cross-disciplinary teams by serving as lead landscape consultant, yielding highly innovative, compelling, and inspired results for exterior spaces.

We design
artful, functional, and
ecologically responsible
landscapes from ground
level to rooftop.



SHARED VISIONS

CDL/S strives to reach a shared vision with our clients that both meets and exceeds expectation. For our most exacting clients, this creative process includes the formation of a three-dimensional computer model and photo-realistic illustrations for a fully integrated and mutually envisaged preview of their soon-to-be outdoor space.



DESIGN TYPOLOGIES

From expansive country gardens to urban rooftop oases in the heart of the city, CDL/S articulates and refines every project utilizing the combined experience of practitioners from design, construction, environmental science, and landscape history backgrounds.

With a **wide-ranging portfolio spanning various project types from hospitality to high-end residential**, and styles from French classical to industrial chic, the landscape design team at CDL/S combines accumulated knowledge with a uniquely creative vision to conceptualize, design, and deliver well-functioning landscapes that are transcendent in character and unmatched in sophistication.



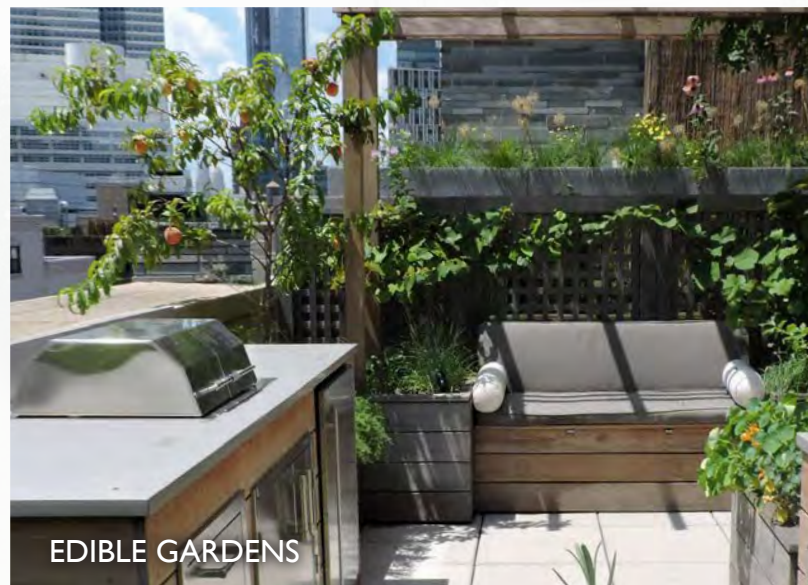
GREEN ROOFS



ROOF/TERRACE GARDENS



CONDOS/COOPS



EDIBLE GARDENS



HOTEL/RESTAURANTS



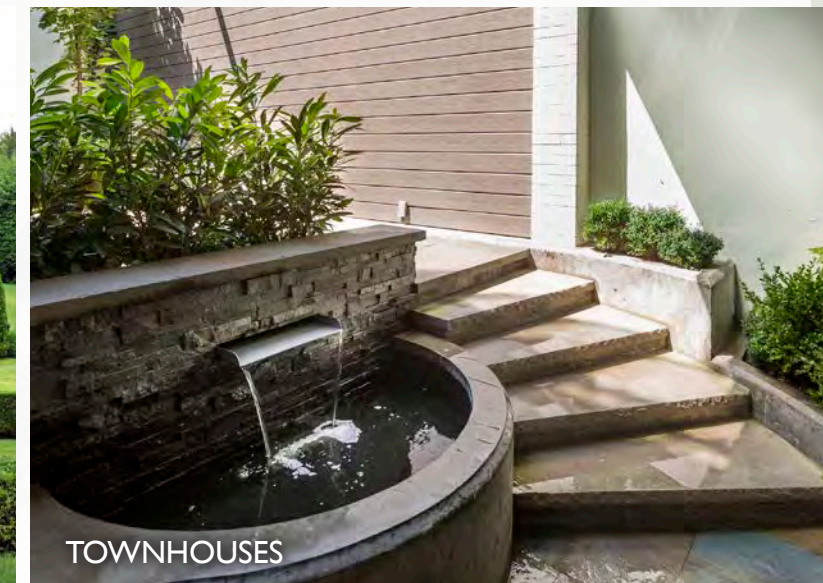
ECO-FRIENDLY DESIGNS



COURTYARDS



COUNTRY ESTATES



TOWNHOUSES



MEMORABLE SPACES

We believe that environments should be tailored to a unique vision. We commit to individual client-based requirements and acknowledge the importance of self-expression and individuality. By filtering these core values through our robust analytical and creative processes, we consistently deliver to our clients one-of-a-kind, positively memorable places.

A close-up photograph of a bee in flight, positioned on the left side of the frame, heading towards a dense cluster of small, pink, tubular flowers on the right. The background is filled with vibrant green foliage, creating a natural and ecological setting. The lighting is bright, suggesting a sunny day.

A core pillar of our design approach is to merge built and biotic environments together in an ecologically considerate manner for the enjoyment and sustenance of both ourselves and our greater natural world.

/ Jon Fouskaris, Design Director

LASTING PLACES

Throughout all phases of design and construction, we formulate adaptive strategies to accommodate a natural evolution of our designs. A key feature of our design approach is a sensitivity to site constraints and material application. It is our belief at CDL/S that creating environments that allow for regular use, changing seasons, variable weather, and future growth is a critical component in the creation of dynamic, timeless spaces.





ARTFUL INFUSION

Our design approach is also characterized by the expansion of the role of the traditional artist. At CDL/S, we look beyond the realm of the conventional and use specialized artists to generate site-specific pieces. By engaging artists in the creative process, the overall design concept is transformed and the experiential quality of the space is enhanced.

A rooftop terrace at night, featuring modern outdoor furniture, a glass-enclosed area, and a city skyline in the background. The terrace is illuminated by warm lights, and the sky is dark with some clouds. The furniture includes a green armchair, a green ottoman, and a green sofa. The glass enclosure is made of frosted glass panels with a dark frame. The city skyline in the background includes several tall buildings, some of which are lit up. The overall atmosphere is modern and sophisticated.

*A good roof is a
terrible thing to waste.*

/ Christian Duvernois, President



LANDSCAPE ART CONSULTATION

CDL/S draws upon a carefully curated and established network of artists to **source and commission captivating outdoor art**, ranging from antique sculptures to custom pieces. By considering appropriate works early on, CDL/S effectively blends art and landscape into a singular context.

Specializing in exterior-grade classical and modern art, sculpture, furniture, and curated objects of curiosity for gardens, museums, and parks, the studio has evolved into a global network. Drawing upon a wealth of knowledge of fine and decorative arts, CDL/S acquires unique pieces and connects clients to renowned landscape artists.

Beyond available works, the studio also commissions unique pieces on a site-specific basis, and casts its' own **limited editions as exclusive CDL/S offerings**. Whilst maintaining client discretion and confidentiality, our goal is to encourage art collections that can be enjoyed "al fresco" and reflect the client's personal interests.

BIOPHILIC STUDIO PIECES & FAUX GREEN WALLS

In addition to the studio's art consultation and acquisition branch, CDL/S has been a pioneer over the last two decades of crafting faux plants into vibrant, life-like compositions. Beginning in 1999 with an all-artificial outdoor garden for the Hermes boutique in Manhattan's Upper East Side, and perfecting the style since then over several faux terraces and urban gardens, including a bucolic band adorning Longchamp's flagship store on Madison Avenue, **CDL/S today maintains a specialized in-house team of craftspeople for the creation of handmade works of decorative art and furniture relating to nature for both exterior and interior use.**

With its' long history of working with faux plantings, uncanny eye for art, and innate understanding of ecological dynamics, CDL/S specializes in producing one-of-a-kind biophilic creations, including faux green walls, vegetated furniture, and other bespoke objects alluding to natural systems. When confronted by the various problematic issues of installing a living green wall, such as constant maintenance and refurbishment of the plant palette, or an urban garden within a space that does not receive sun, such artificial alternatives open up new avenues for clients seeking the psychological and aesthetic benefits of nature without those conditions necessary to support plant life.

Today, CDL/S is a leader in the design and production of captivating, dynamic, and convincing multi-species plant compositions. Through their inherently naturalistic effect, these unique biophilic compositions tap into an innate human affinity for nature, thereby helping to elevate people's moods within any setting.

Right: *Lithophytograph #1*
2022, 60" x 48"
Faux plant and stone,
white oak frame



LEADERSHIP



/ Christian Duvernois, President

Born in Paris, Christian Duvernois has distinguished himself as a landscape designer, historian, lecturer and gallery owner. In 1981, Christian moved from Paris to New York City and opened an art gallery on Madison Avenue called Facade. Facade, which was known in both New York and European art circles, specialized in classical and contemporary architecture and landscape themes. Through painting, sculpture, photography and architectural drawing, the gallery featured works that explored the various aspects and sensibilities of man's relationship with the natural environment.

Since 2001, Christian has operated a landscape design firm specializing in high-end residential, commercial, institutional, ecological and urban gardens, while remaining active as a private dealer in works of art. A noted lecturer on European classical gardens, Christian is the author of a book on the Anglo-Chinese gardens in the second half of the 18th century, entitled *The Last Garden of Versailles: Marie-Antoinette at Trianon* (Rizzoli, 2008). In 2010, the Horticultural Society of New York honored Christian for his "outstanding contribution to landscape design."



/ Jon Fouskaris, Design Director

Drawing from his dual background of landscape architecture and environmental biology, Jon Fouskaris crafts innovative, ecologically conscious landscapes across multiple scales and styles. Leading the firm's designs from the conceptual stage up through construction and implementation, Jon fuses a broad knowledge of low-impact design and contemporary landscape theory with an acute technical proficiency in material and horticultural applications at the site scale. He has been instrumental in guiding the company's trajectory towards sustainable and restorative practices, highlighted in part by the implementation of a 7,000-SF living roof project constituting solely native plant species and sustainably-harvested hardwood decking supporting the conservation of the Uaxactún Community Forest in Guatemala. Prior to joining CDL/S, Jon worked as a landscape designer for the Wildlife Conservation Society's Exhibition and Graphic Arts Department (EGAD) on projects ranging from public spaces and children's play areas to green infrastructure projects and live animal habitats for the organization's zoos and aquarium. He also served in the planning division of the New York City Department of Parks and Recreation, and was a contributing researcher to the *AIA Guide to New York City, Fifth Edition* (Oxford University Press, 2010).



648 Broadway, Suite 804
New York, NY 10012
212.268.3628
info@ChristianDuvernois.com
ChristianDuvernois.com

CHRISTIAN
DUVERNOIS
LANDSCAPE / STUDIO